



HENRY COUNTY SADDLE CLUB RULE BOOK

2025



Table of Contents

Contact Information

- HCSC Officers 2

General HCSC Information

- HCSC Mission Statement 3
- HCSC Position Statement on Animal Welfare and Code of Ethics 3
- Information & Requirements for Joining HCSC 3
- HCSC Point System & Ribbon Colors 4
- Scoring System 5

HCSC General Rules

- General Rules 5
- Explanation of Classes 7

By-Laws of HCSC 12

General Horse Information 14

2025 Henry County Saddle Club

General Contact Email:

henrycosaddleclub@gmail.com

President:

Jacquelyn Furlong
(502) 595-7141
4409 Taft Ct
Louisville, KY 40299

Vice President:

Jessica Townsend
(502) 220-5981

Treasurer:

Jacquelyn Furlong
(502) 595-7141

Secretary:

Jennifer Boggs-Hall
(859) 274-8755

Board Members:

Charles Furlong
Brittany Price
Nichole Underwood
Alex Beckley
Lauren Frazier

HCSC Mission Statement

“Our mission is to provide a safe, welcoming, and competitive environment for riders of all ages and skill levels. We are dedicated to promoting good horsemanship, encouraging true sportsmanship, and fostering a community where learning, respect, and fun go hand in hand.”

Henry County Saddle Club Position Statement on Animal Welfare and Code of Ethics

At Henry County Saddle Club the welfare of horses and all animals involved in our events is our highest priority. We are committed to ensuring that all animals are treated with respect, compassion, and dignity at all times—on and off the show grounds.

We expect all participants, including exhibitors, members, spectators, and show personnel, to uphold a high standard of humane treatment and ethical behavior. Good horsemanship begins with responsible care, and our club promotes practices that reflect knowledge, kindness, and empathy toward every animal.

The standard for acceptable treatment will be guided by what a reasonable, informed individual—well-versed in equine care, handling, and exhibition—would recognize as ethical, responsible, and non-abusive. Any action or condition that could reasonably be viewed as cruel, negligent, or inhumane will not be tolerated.

In addition, all individuals on the show grounds are expected to conduct themselves with integrity and sportsmanship. Behavior that is threatening, abusive, profane, illegal, or otherwise inappropriate will be addressed promptly by show officials or management.

Show management reserves the right to take appropriate action in response to violations of this policy. This may include verbal warnings, disqualification, removal from the premises, and forfeiture of entry fees or awards.

By fostering a culture of respect—for both animals and people—we aim to create a safe, inclusive, and honorable environment where riders and their horses can thrive.

Information and Requirements for Joining Henry County Saddle Club (HCSC)

Application for Membership: consists of names, address, phone number, email. If multiple family members are enrolling in membership, only one phone number, address and email are required. All names **MUST** be listed and cannot be changed as the season progresses.

Dues: Dues are due at the time of enrollment in club membership. This can be done at any point during the HCSC show season. Membership is valid from date of enrollment and expire January 1 on the following year.

Dues are as follows:

- Single Membership: \$20
- Family Membership: \$35

HCSC Point System & Ribbon Color:

- 1st: Blue Ribbon
- 2nd: Red Ribbon
- 3rd: Yellow Ribbon
- 4th: White Ribbon
- 5th: Pink Ribbon
- 6th: Green Ribbon

Points are based on number of horses and riders in the class and capped at 6 points. See showbill for classes that do not earn points.

Example 1, 10 horses exhibited in class:

- 1st: 6 Points
- 2nd: 5 Points
- 3rd: 4 Points
- 4th: 3 Points
- 5th: 2 Points
- 6th: 1 Point

Example 2, 4 horses exhibited in class:

- 1st: 4 Points
- 2nd: 3 Points
- 3rd: 2 Points
- 4th: 1 Point

*If any horses exhibited in the class are disqualified, the points shall still stand as long as the horse entered the arena at the start of the class.

For show high-point and year-end standings, the classes that count towards point totals in each division are as follows:

Ranch Division:

- Open Ranch Trail
- Open Ranch Riding
- Open Ranchmanship
- Open Ranch Pleasure
- Ranch Conformation (Geldings or Mares)

Western Division:

- Halter (Geldings or Mares)
- Showmanship (PeeWee, Youth or Adult)
- Western Pleasure (PeeWee, Youth or Adult)
- Horsemanship (PeeWee, Youth or Adult)
- Trail (PeeWee, Youth or Adult)

English Division:

- Halter (Geldings or Mares)
- Showmanship (PeeWee, Youth or Adult)
- Trail (PeeWee, Youth or Adult)
- *PeeWee Ground Poles
- Open Hunter Over Fences
- Open Equitation Over Fences
- English Pleasure (PeeWee, Youth or Adult)
- English Equitation (PeeWee, Youth or Adult)

Gaited Division:

- Halter (Geldings or Mares)
- Showmanship (PeeWee, Youth or Adult)
- Trail (PeeWee, Youth or Adult)
- Gaited Pleasure (PeeWee/Youth or Adult)
- Gaited Country Pleasure (PeeWee/Youth or Adult)

Scoring System for Patterned Classes

HCSC Judges are encouraged to follow the AQHA Rulebook for scoring, however doing so is not mandatory. The following is general guidance:

“The AQHA scoring system calculates the scores with a zero to infinity base and penalties of 3, 5 and 10. Each maneuver is given a numerical representation of how well the rider and horse perform the pattern with the amount ranging from +3 to -3 in half-point increments. For example, in a showmanship class; a very straight, quick, elegant back, without any faults, would receive around a +3 on the scoresheet, whereas a sloppy, crooked, ill-mannered back would potentially get a score as low as -3.

As for the average ride, the score would reflect near the middle being a 0. All points are totaled for each to get a final score with 70 being standard. This format gives judges the opportunity to carefully select riders into categories of performance, while also allowing the participant to examine the scoresheet to pinpoint areas of improvement.”

General Rules

1. In order to ask for a rule addition, deletion or change request forms and procedures, a request must be submitted via email to henrycosaddleclub@gmail.com. Except for safety purposes, revisions will not take effect until the next printing of the rulebook.
2. All stallions, regardless of age, to be shown or ridden by an adult ONLY, aged over 18 years as of January 1st of that calendar year. Youth aged 17 and under may show colts less than 1 year of age.
3. Participants in all classes and events are to be attired in generally accepted horse-appropriate attire including full-length pants and a boot or shoe with a well-defined heel.

This is mandatory and show officials have the right to excuse any rider on the grounds for failing to comply with this rule.

4. With the exception of classes designated for bareback riding, appropriate saddles for the event being shown in are mandatory.
5. Helmets are strongly encouraged for every competitor but are MANDATORY in over-fences classes (Pee-Wee Ground Poles, Hunter Over Fences, Equitation Over Fences).
6. No re-rides permitted due to breakage/failure of equipment or fall of horse and/or rider once the contestant has entered the course. In judged events, the event has begun when the judge begins judging and is complete when the judge has turned in the placing. In contest classes, the course is defined as from the time the timer starts running and continues until the time stops.
7. Excessive use of whips, bats, spurs or abuse of horse or pony will be cause for dismissal or disqualification from class.
8. Electronic timer preferred in all timed events, however, backup stop watch must be used after three (3) malfunctions of the electric timer and should be read by two (2) people. If timer fails, contestant has the option to receive a rerun.
9. In the event of ties in a timed event, the tie is to be run off between the riders involved. Best time of the run to place in order.
10. Any breaking of the pattern is grounds for disqualification in timed events.
11. An unruly horse may be dismissed from the class by the judge or show management at any time.
12. Age of the rider is to be computed as of the 1st of January of the current year. Rider is to ride in his/her own age group if age groups are offered.
 - a. Pee-Wee 11 & Under
 - b. Youth 12-18
 - c. Adult 19 & Over
13. The gate must be closed in all events when the class is in progress. For judged events some exceptions will be allowed for expediency. These exceptions include classes where the contestant shows individually from the gate including the following classes: halter, showmanship, horsemanship, trail and equitation classes. However, these classes still require someone controlling the gate so it can be closed quickly in the event a horse gets loose or out of control. For contest events the gate must be closed while the contestant makes their run. The contestant can begin their run as soon as any part of the horse crosses the imaginary line drawn between the gate posts on either side of the arena gate.
14. Contestants must be prepared and at the arena when the class is called to enter. Failing to communicate need for a tack change or other delay with show officials and not being present when the class is called is grounds for entry forfeit and the rider will be disqualified.
15. During any Pee-Wee Contest class, rider can be accompanied by an adult with or without a lead line. Must follow same rules for class, i.e.: horse/rider and handler must cross timeline together. Horse/rider and handler must follow proper attire rules.
16. Classes are to be split if they are too large for the ring to adequately handle.

17. Each contestant must wear his/her correct number so that it is visible to the judge. It is strongly recommended that contestants have two identical numbers pinned on either side of the saddle pad for judged riding classes and either on hip or back for in-hand classes.
18. Horses, ponies and mules are permitted to compete at Henry County Saddle Club.
19. Judges decisions are final.
20. No refunds will be given for scratched classes.
21. Members qualify for year-end awards and must compete at three (3) shows to qualify. Points and shows accumulated prior to becoming a member do not count towards year end standings.
22. Grand/Reserve Halter is for 1st and 2nd Place in Halter Geldings and Halter Mares.
23. Riders in Leadline may NOT show in Walk-Walk
24. Riders in Leadline or Walk-Walk may NOT show in other judged riding classes but may show in contest classes.
25. Negative, current Coggins test required (issued within the last 12 months)
26. Jackpot classes pay out 100%.
 - a. 1st: 50%
 - b. 2nd: 30%
 - c. 3rd: 20%
27. Any act of discourtesy or disobedience to the officials on the part of the owner, contestant or contestants, will disqualify the horse and rider for the remainder of the show and the owner shall forfeit his/her entry and other fees. Management reserves to itself the power to remove any owner, contestant, contestants or horses from the show without being liable for compensation.

Class Description & Rules

Ranch Trail - Ranch Trail patterns will call for walk/trot/and lope. This class can be shown in western tack only. Horse and rider teams will be asked to perform a pattern, posted prior to the show, that includes but is not limited to: opening gates, riding over and through logs, and backing through obstacles. This is not a timed event. 3 refusals will constitute a missed obstacle and will result in a penalty.

Ranch Conformation Mares/Geldings - Judged on the form to function of today's Ranch Horse in hand. Exhibitors will walk in to the arena, to the judge. The judge will step to the side, allowing the horse and handler to trot past, turn, and line up along the rail. When all horses are in the pen, the judge will inspect conformation of each individual horse. Horses must be outfitted in a halter and lead rope or shank. Excessive silver is discouraged on tack. Handler must be in full-length pants, shirt, and appropriate riding footwear. Excessive "bling" is discouraged and handlers should avoid rhinestones, glitter, etc.

Ranch Riding - Ranch riding is a pattern class where each horse and rider team performs the pattern individually. There is no rail work. The purpose of the ranch riding class is to measure the ability of the horse to be a pleasure to ride while being used as a mean of conveyance from

performing one task to another. The horse should reflect the versatility, attitude and movement of a working ranch horse riding outside the confines of an arena. The horse can be ridden with light contact or on a relatively loose rein without requiring undue restraining. The ideal ranch riding horse will have a natural head carriage at each gait. Patterns will be provided by show management prior to each show. Excessive silver is discouraged on tack. Handler must be in full-length pants, shirt, and appropriate riding footwear. Excessive “bling” is discouraged and handlers should avoid rhinestones, glitter, etc.

Ranch Reining - Each contestant will individually perform the required pattern. Each horse will be judged on the neatness, dispatch, ease, calmness, and speed with which it performs the pattern. Excessive jawing, open mouth, or head raising on stop; lack of smooth sliding stops on haunches; breaking gaits; refusing to change lead; anticipating signals; stumbling or falling; wringing tail; backing sideways; changing hands or reins; losing the stirrup; holding on to the saddle, two hands on reins; or any unnecessary aid (such as unnecessary talking, petting, spurring, quirting, jerking of reins, etc.) given by the rider to the horse to induce the horse to perform, will be considered a fault and scored accordingly. The horse should rein and handle easily, fluently, and effortlessly and with reasonable speed through the pattern. Any horse not following the pattern will be disqualified. Scoring will be on the basis of 0 to infinity, with 70 denoting an average performance. Judging begins when the horse enters the arena. Final placings are determined on cumulative score. Pattern will be provided by show management prior to each show. Excessive silver is discouraged on tack. Handler must be in full-length pants, shirt, and appropriate riding footwear. Excessive “bling” is discouraged and handlers should avoid rhinestones, glitter, etc.

Ranchmanship - This class recognizes the exhibitor’s ability to ride a horse functionally and correctly using various aids to cause the horse to perform required basic maneuvers. Up to discretion of the judge, this class will either be judged on the rail at a walk/jog/lope, or using a pattern to be provided by show management prior to each show. Excessive silver is discouraged on tack. Handler must be in full-length pants, shirt, and appropriate riding footwear. Excessive “bling” is discouraged and handlers should avoid rhinestones, glitter, etc.

Ranch Pleasure - This class serves to measure the ability of the horse to be functional and a pleasure to ride while being used as a means of conveyance from one task to another. This horse should be well-broke, relaxed, quiet, soft, and cadenced at all gaits. The horse should be ridden on a relatively loose rein with light contact and without requiring undue restraint. Excessively long, floppy reins will not be given extra credit. The horse should be responsive to the rider and make all required transitions smoothly, timely, and correctly. The horse should be soft in the bridle and yield to contact. Horses shall be shown individually at the walk, trot, and lope in both directions. Excessive silver is discouraged on tack. Handler must be in full-length pants, shirt, and appropriate riding footwear. Excessive “bling” is discouraged and handlers should avoid rhinestones, glitter, etc.

Halter Mares/Geldings - Judged on the form to function of each individual horse in hand. Exhibitors will walk in to the arena, to the judge. The judge will step to the side, allowing the horse and handler to trot past, around a cone, and line up along the rail. When all horses are in the pen, the judge will inspect conformation of each individual horse. Horses must be outfitted in a halter, lead rope or shank. Handler must be in full-length pants, shirt, and appropriate riding footwear.

Grand/Reserve Halter - Top 2 horses from Halter Mares, Halter Geldings, and Gaited Halter will be called back in the arena. They will follow the same pattern in previous classes. Champion and Reserve Champion will be awarded.

Showmanship - The showmanship class is judged on an exhibitor's ability to execute practical and basic halter class maneuvers from the ground. The class should always be judged with this in mind, giving credit to the exhibitor who can correctly perform each maneuver of the total pattern or run. Judges should refrain from conducting the class routine in any manner that attempts to trick, confuse, or mislead exhibitors. In showmanship at halter, conformation of the horse is not judged. Exhibitors should be neat, clean, and well-groomed. Clothing shall be as stated in the section on judged classes. Chaps and spurs are NOT permitted in showmanship. Equipment. Use a clean halter that is adjusted to fit the horse. The halter should fit well on the horse's head, to maximize response to subtle halter cues. Silver halters shall not count over a nice, clean, well-fitted halter. Lead straps are often attached to a chain and snap. The lead strap may be snapped below the jaw in the center ring of the halter, or the chain can be run under the horse's chin and snapped to the upper or lower halter ring on the right side of the horse's head.

Leadline - Children under the age of 6 as of January 1 of the current year will show riding the horse as a handler, holding the lead rope of said horse, walks in and performs requests of the judge. The judge may not call for any speed over a walk.

Walk/Walk Western Pleasure - A class for exhibitors who have "aged out" or lack the experience to show in classes with gaits over a walk. Exhibitor will ride their horse at a walk only, showing both directions, a line-up, and a reverse. Handler may accompany the horse and rider team, but may never touch the horse or tack.

Western Pleasure - The Western Pleasure horse is one who exhibits cadence and ease of riding in western attire. This class will be judged in both directions on the rail. HCSC western pleasure classes call only for a walk and jog, reverse, line-up and back. Tack should be western, well-fitting, clean. Riders must be in full-length pants, shirt, and appropriate riding footwear.

Western Horsemanship - Western Horsemanship is judged on the horse and rider's ability to follow commands in an effortless fashion. The class may have a pattern, provided by show management, or may be judged on the rail at a walk/jog per the judge's decision. If judged on the rail, horse and rider team will be required to perform gaits each direction, stop, and back up. Patterns provided by HCSC may include maneuvers such as walk, jog, extended jog, stop, back up and/or turns on the haunches. Tack should be western, well-fitting, clean. Riders must be in full-length pants, shirt, and appropriate riding footwear.

Gaited Country Pleasure - A Gaited Country Pleasure horse is one who looks like a pleasure to ride down the road. A country pleasure horse should have a gait that looks like it could travel all day over any terrain with a willing attitude. At HCSC shows, the announcer will call for a walk and "favorite gait" in both directions, as well as a line up. Judge may ask horses to back up. Tack should be well-fitting, clean. Riders must be in full-length pants, shirt, and appropriate riding footwear.

Gaited Pleasure - The Gaited Pleasure horse is one who shows more expression and animation as the gaited country pleasure horse. At HCSC shows, the announcer will call for a walk and "favorite

gait" in both directions, as well as a line up. Judge may ask horses to back up. Tack should be well-fitting, clean. Riders must be in full-length pants, shirt, and appropriate riding footwear.

Trail - Trail classes will only call for a walk and jog/trot. This class can be shown in any tack. Horse and rider teams will be asked to perform a pattern, posted prior to the show, that includes but is not limited to: opening gates, riding over and through logs, and backing through obstacles. This is not a timed event. 3 refusals will constitute a missed obstacle and will result in a penalty. Tack should be well-fitting, clean. Riders must be in full-length pants, shirt, and appropriate riding footwear.

Hunter Over Fences/Equitation Over Fences - Hunter Over Fences is a class where horse and rider teams are judged on their cadence, manners, consistency and style. Where Hunter Over Fences is judged primarily on the horse, Equitation is judged on the rider's ability to navigate and jump a course. Courses can be completed at a trot or canter. HCSC classes are 18" crossrails. Tack should be English in style, well-fitting, clean. Riders must be in full-length pants, shirt, and appropriate riding footwear.

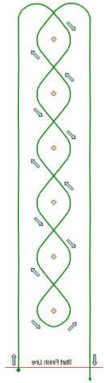
English Pleasure - HCSC English Pleasure is a walk/trot class. Horses are judged on their manners, responsiveness, and quality of movement at both gaits, in both direction. Horses will be asked to back up and reverse on the rail at a walk or trot. Tack should be English in style, well-fitting, clean. Riders must be in full-length pants, shirt, and appropriate riding footwear.

English Equitation - HCSC English Equitation is judged at a walk and trot. Judges may ask the horse and rider teams to compete on the rail as well as in the pattern - one direction, or both. The horse and rider team will be judged on their ability to perform a pattern with proper equitation. Tack should be English in style, well-fitting, clean. Riders must be in full-length pants, shirt, and appropriate riding footwear.

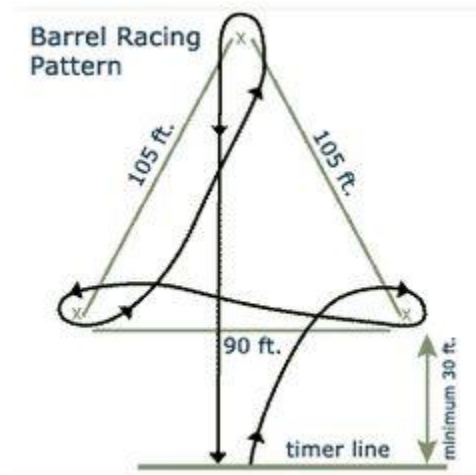
Fun Class - Fun class examples at HCSC are egg and spoon, ride-a-buck, keyhole race, etc. This will be announced at each show. This class does not earn points that count towards show high-point or year-end awards.

Warmup Classes - Warmup classes are provided for poles and barrels. HCSC has a time limit of 60 seconds for each warmup. Riders may enter as many horses in this class as possible. Times will not be given.

Poles - Six poles set in a straight line, each spaced 21' apart with the start-finish line 21' in front of the first pole. The rider crosses the start line, travels to pole number 6, bends back through the poles, turns, bends through the poles to number 6, turns, and travels across the finish line. There is a 5-second penalty for knocking over each pole. Poles will not be set up during the run. Riders must remain in their designated lanes. Riders must be in full-length pants, shirt, and appropriate riding footwear.



Barrels - The barrel race pattern will consist of three (3) barrels arranged in a triangle. The left and right barrel will be spaced thirty 90 feet apart and twenty 30 feet from the start/finish line. The third barrel will be spaced 105 feet from both the left and right barrels. All three (3) barrels will be placed a safe distance from the arena fence. Riders may touch the barrels. However, riders knocking over a barrel shall carry a five (5) second penalty per barrel. Failure to follow the course shall cause disqualification. Riders must be in full-length pants, shirt, and appropriate riding footwear.



By Laws of Henry County Saddle Club:

Article I – Name and Purpose:

The name of the Club shall be the Henry County Saddle Club. Our purpose is as follows: To promote knowledge and interest in equitation and all forms of horsemanship. To encourage and foster a comrade among its members with a central interest in the training and working of all types of horses. To instill in the young people a love of the sport. To hold horse shows, trail rides, to participate in parades and hold social gatherings designed to entertain whole families and groups of families.

Article II – Membership:

1. Membership shall be open to any person or family interested in any or all forms of horsemanship. It is not necessary to own a horse.
2. Memberships include: a. Single Membership b. Family Membership – Being defined as immediate family (mother, father, brother, sister, etc.) c. Group/Club Membership – Being defined as a group of two (2) to fifteen (15) members of association desiring Club membership
3. When a member of a family marries or a single member gets married, they may join the club merely by paying dues within sixty (60) days.
4. When a head of a family gets married, the spouse is automatically a member because a family membership was already in existence.

Article III – Dues:

1. Annual dues are due and payable by January 1 of each year. The Club year runs from January 1st to December 31st. Schedule of dues are as set annually by the Board.
2. Point accumulation shall begin upon the date of payment of dues.
3. Members who are delinquent with their dues may not participate in election of officers, voting, or any Club business matters including year-end accumulation of points or receive any gratuitous benefits from the Club during the delinquent period.

Article IV – Expulsion of Members:

1. Members may be expelled from the club for good cause shown. Thirty days written notice shall be given to all club members of the intention of the club to take such action at a regular club meeting. In order to expel a member, two thirds of all members voting at such regular meeting, either in person or by written proxy, must vote in favor of expulsion.

Article V – Elections:

1. All Officers and Directors of the Club shall be elected to a one (1) year term by a majority of the total voting membership recognizing absentee and proxy ballots.
2. Only those members in good standing will be eligible to vote.
3. Nomination of officers will be made at the general meeting held in January.
4. Election and installments of officers will be made at the general meeting held in January.
5. Election shall be by closed ballot only.
6. Elected officers must obtain a majority of the votes to be voted into office.

Article VI – Officers and Directors:

1. Elected officers shall consist of: a. President b. Vice President c. Secretary d. Treasurer
2. Rules for elected officers: a. Any elected officer missing three (3) consecutive or four (4) total meetings shall be replaced by the President and ratified by a majority vote of the membership. In the event that no members are nominated for officer positions, the President will account for any or all vacant offices.
3. Duty of the President: a. It shall be the duty of the president to conduct all meetings. b. The President shall keep the discussion confined to the subject on the floor until its conclusion. c. The President shall appoint all committee, representatives, and shall fill vacated offices following procedure. d. The President has the primary responsibility for following up with each officer and/or committee chairman to insure the Club is running properly. e. The President shall represent the Club at any function or external activity requiring club representation.
4. Duties of the Vice President: a. The Vice President shall conduct the meetings when the President is unable to attend. b. The Vice President shall assist the President when required or necessary.
5. Duties of the Secretary: a. It is the duty of the Secretary to take minutes at all regular meetings and any special meetings called by the President. 2 b. The Secretary shall maintain the minutes in such a way as to be open to any members review. c. The Secretary is responsible for all club correspondence including Thank You notes when necessary.
6. Duties of the Treasurer: a. It shall be the duty of the Treasurer to process all funds pertaining to the Club. b. The Treasurer will give a complete financial report at each regular meeting. c. The Treasurer shall issue receipts for all funds received when a receipt is appropriate.
7. Executive Board Rules: a. The Executive Board shall be voted on by the club, requiring a two-thirds majority vote on each member. The Board must consist of three (3) to six (6) members.

Article VII – Meetings:

1. The Club shall hold at least one regular meeting annually and shall be governed by the Robert's Rules of Order.

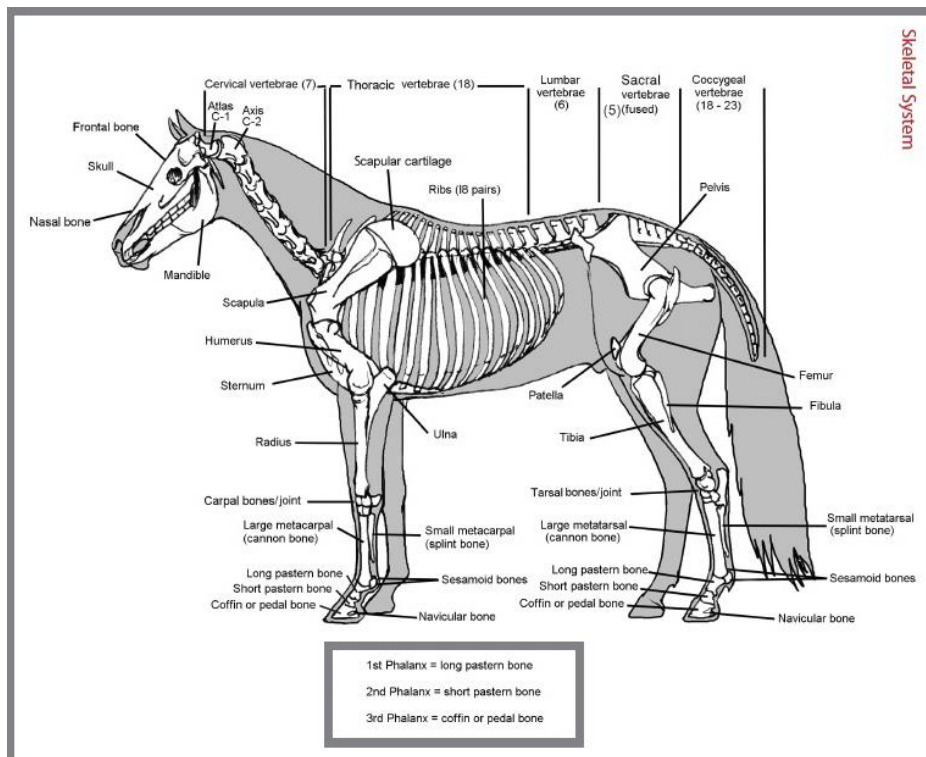
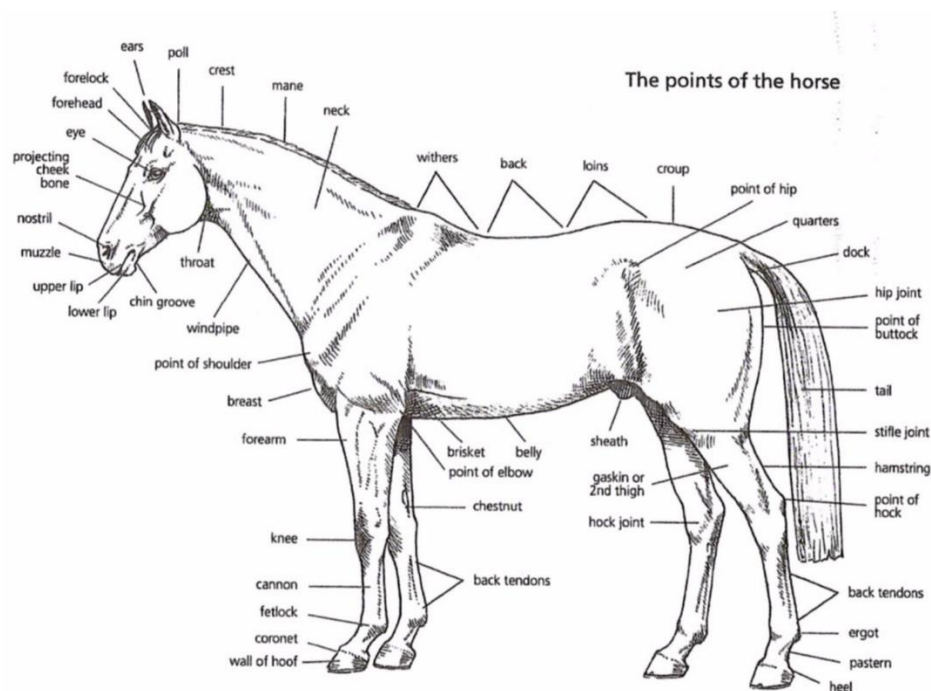
Article VIII – Checks, Contracts, Leases, Deeds:

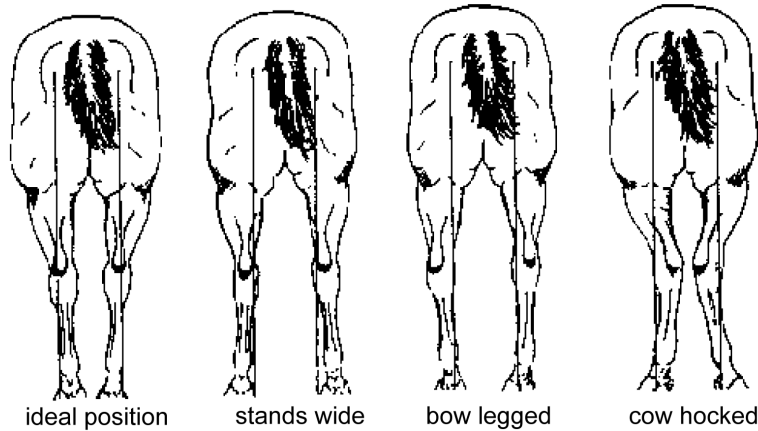
1. All Club checks must be signed by the President and Treasurer or such other person as may be designated by the Executive Board.
2. Upon recommendation of the Executive Board and with a vote of approval of a majority of the membership, in person or by written proxy at a designated meeting, the President and one other board member appointed designee shall be authorized to sign contracts necessary to the interest of the club.
3. Significant transactions involving the assets of the club shall be subject to approval by two thirds of qualified members voting in person or by written proxy at a designated meeting. a. Significant transactions are those involving the purchase, sale, lease or other transfer of real property. The purchase, sale, or lease transfer of personal property valued at \$2,000 or more, or the involvement of club funds except in checking and savings deposits or money market funds.

Article IX – Debt Obligation and Personal Liability:

1. No member, officer, or director of this Club shall be personally liable for the debts or obligation of this corporation or any nature whatsoever, nor shall the property of those parties be subject to the payment of the debts or obligations of this corporation, except to the extent that federal or state law shall mandate individual party responsibility for tax trust funds.

General Horse Information:



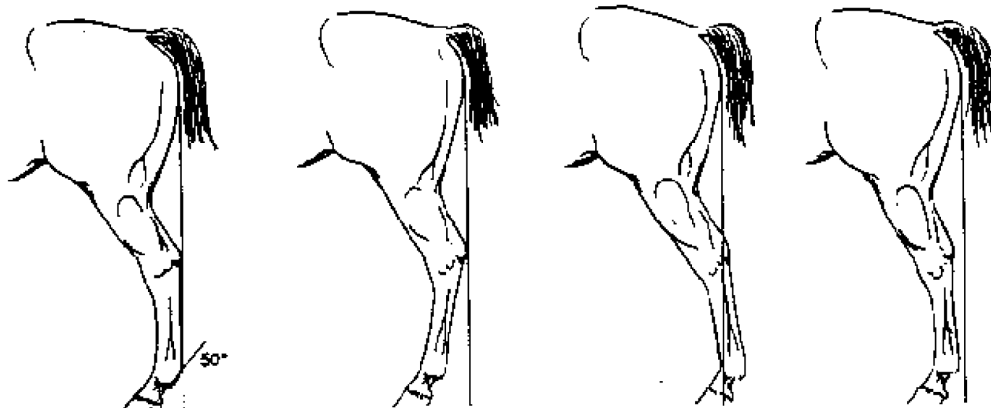


ideal position

stands wide

bow legged

cow hocked



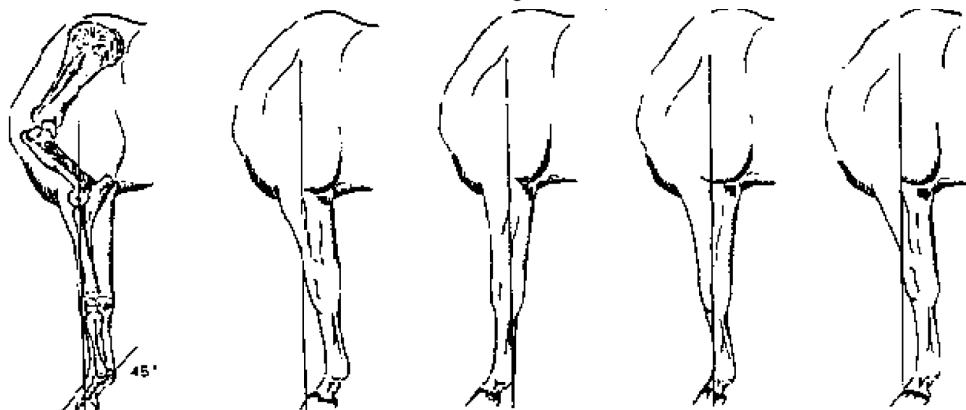
ideal position

stands under

camped out

leg too straight

Vertical line from point of buttock should touch the edge of cannon from the hock to the fetlock and meet the ground behind the heel



ideal position

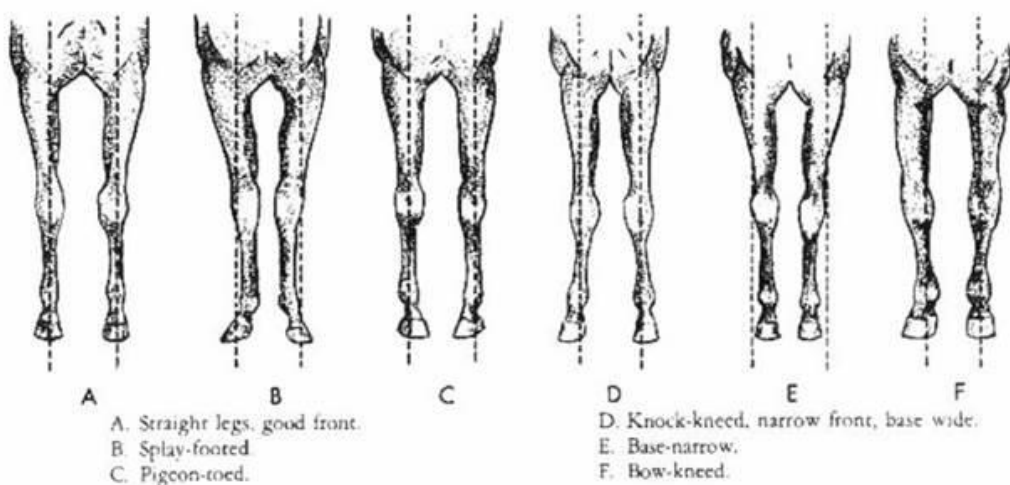
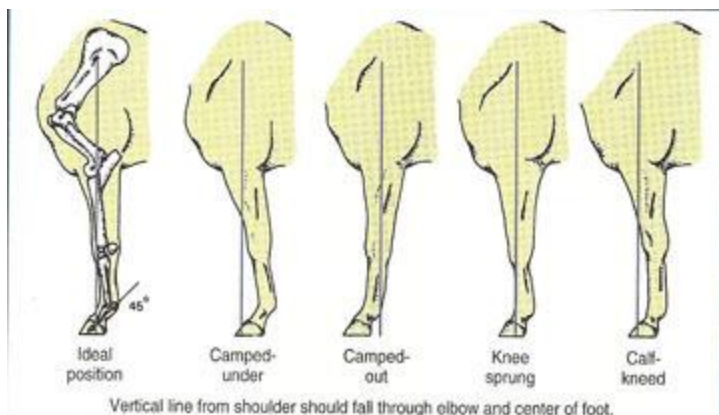
camped under

camped out

knee sprung

calf kneed

Vertical line from the shoulder falls through elbow and center of foot



Body Condition Score Chart

Areas of emphasis for body condition scoring: thickening of the neck, fat covering the withers, fat deposits along hockbone, fat deposits on flanks, fat deposits on inner thighs, fat deposits around tailhead, fat deposits behind shoulders, fat covering ribs, shoulder blends into neck.



859-473-1988, www.ker.com

1 Poor

Animal extremely emaciated; spine, ribs, tailhead, points of hip and buttock projecting prominently; bone structure of withers, shoulders, and neck easily noticeable; no fatty tissue can be felt.



2 Very Thin

Animal emaciated; slight fat covering over base of spine; ribs, tailhead, points of hip and buttock prominent; withers, shoulders, and neck structure faintly discernable.



3 Thin

Fat buildup about halfway on spine; slight fat cover over ribs; spine and ribs easily discernable; tailhead prominent, but individual vertebrae cannot be identified visually; points of hip appear rounded but easily discernable; points of buttock not distinguishable; withers, shoulders, and neck accentuated.



4 Moderately Thin

Slight ridge along back; faint outline of ribs discernable; tailhead prominence depends on conformation; fat can be felt around it; points of hip not discernable; withers, shoulders, and neck not obviously thin.



5 Moderate

Back is flat (no crease or ridge); ribs not visually distinguishable but easily felt; fat around tailhead beginning to feel spongy; withers appear rounded over spine; shoulders and neck blend smoothly into body.



6 Moderately Fleshy

May have slight crease down back; fat over ribs fleshy/spongy; fat around tailhead soft; fat beginning to be deposited along sides of withers, behind shoulders, and along sides of neck.



7 Fleshy

May have crease down back; individual ribs can be felt, but noticeable filling between ribs with fat; fat around tailhead soft; fat deposited along withers, behind shoulders, and along neck.



8 Fat

Crease down back, difficult to feel ribs; fat around tailhead very soft; area along withers filled with fat; area behind shoulders filled with fat; noticeable thickening of neck; fat deposited along inner thighs.



9 Extremely Fat

Obvious crease down back; patchy fat appearing.

Kentucky Equine Research, 3910 Delaney Ferry Rd., Versailles, KY 40383, 859-473-1988, www.ker.com

© Copyright Kentucky Equine Research, 2019

